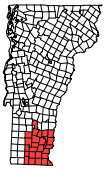
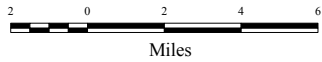


2006 Windham Regional Plan



139 Main St • Suite 505 • Brattleboro, VT 05301
(802) 257-4547 www.rpc.windham.vt.us



June 2006; C:\RegPln06\Education.mxd

Note: This map should be used for general reference and planning purposes only.

Sources (see appendix): 19, 20, also 1, 2, 3

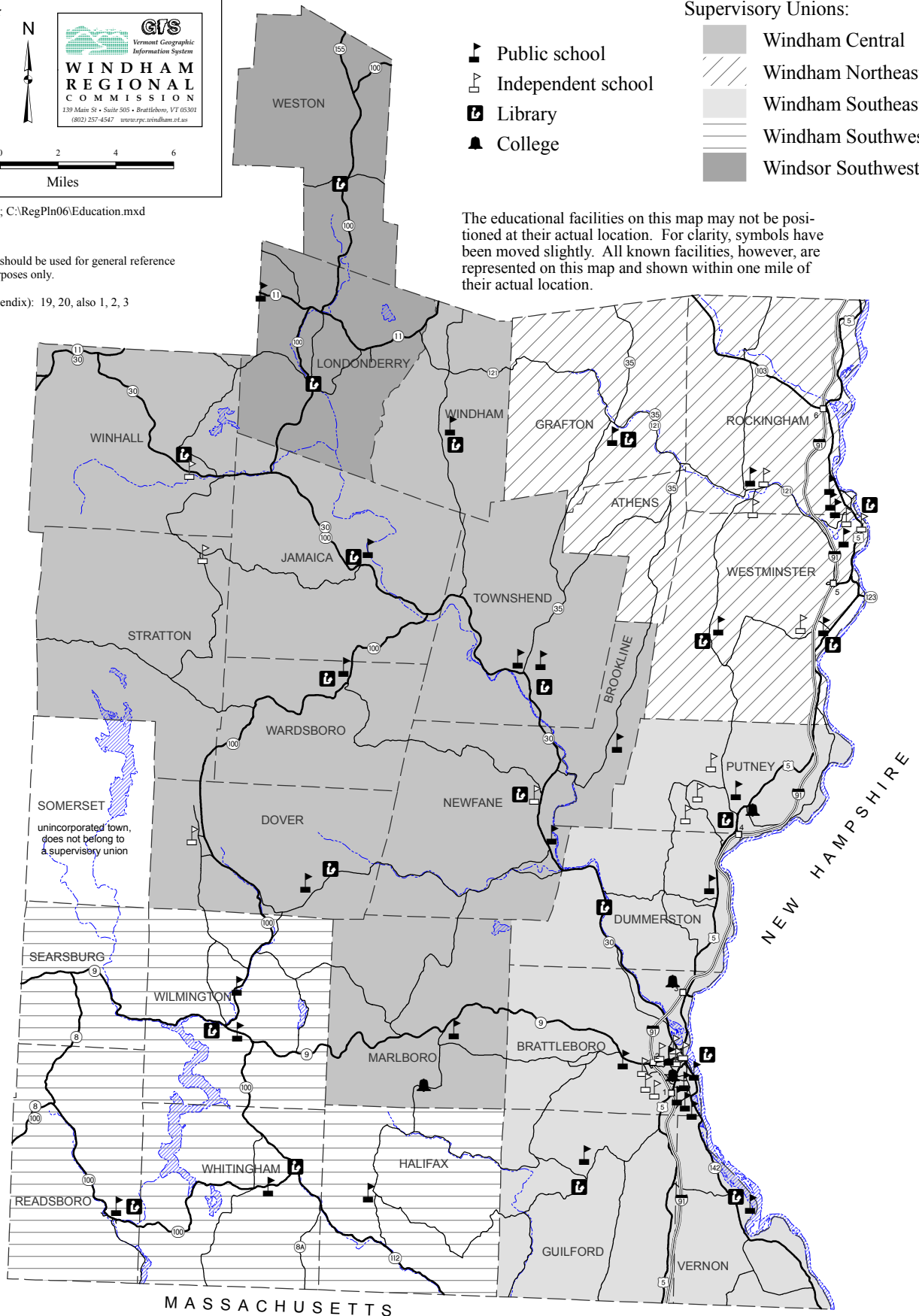
Educational Facilities

Supervisory Unions:

- Public school
- Independent school
- Library
- College

- Windham Central
- Windham Northeast
- Windham Southeast
- Windham Southwest
- Windsor Southwest

The educational facilities on this map may not be positioned at their actual location. For clarity, symbols have been moved slightly. All known facilities, however, are represented on this map and shown within one mile of their actual location.



SOMERSET
unincorporated town,
does not belong to
a supervisory union

MASSACHUSETTS

NEW HAMPSHIRE