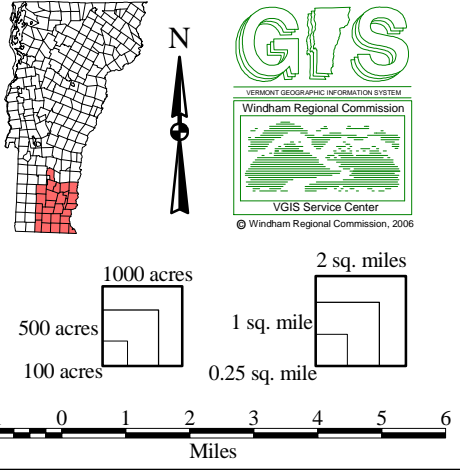


2006 Windham Regional Plan



June 2006; C:\REG\PLN01\UTILITY.APR: 11x17 map

Note: This map should be used for general reference and planning purposes only.

Sources (refer to appendix): 6, 7, 8, 9, 10, 11, 12, 13, 14, also 1, 2, 3

Utilities

Electric utility franchise areas:

- Central Vermont Public Service Corporation
- Green Mountain Power Corporation
- Vermont Electric Co-op
- Village of Readsboro Electric Department
- Village of Jacksonville Electric Department

Electric Generation Facility:

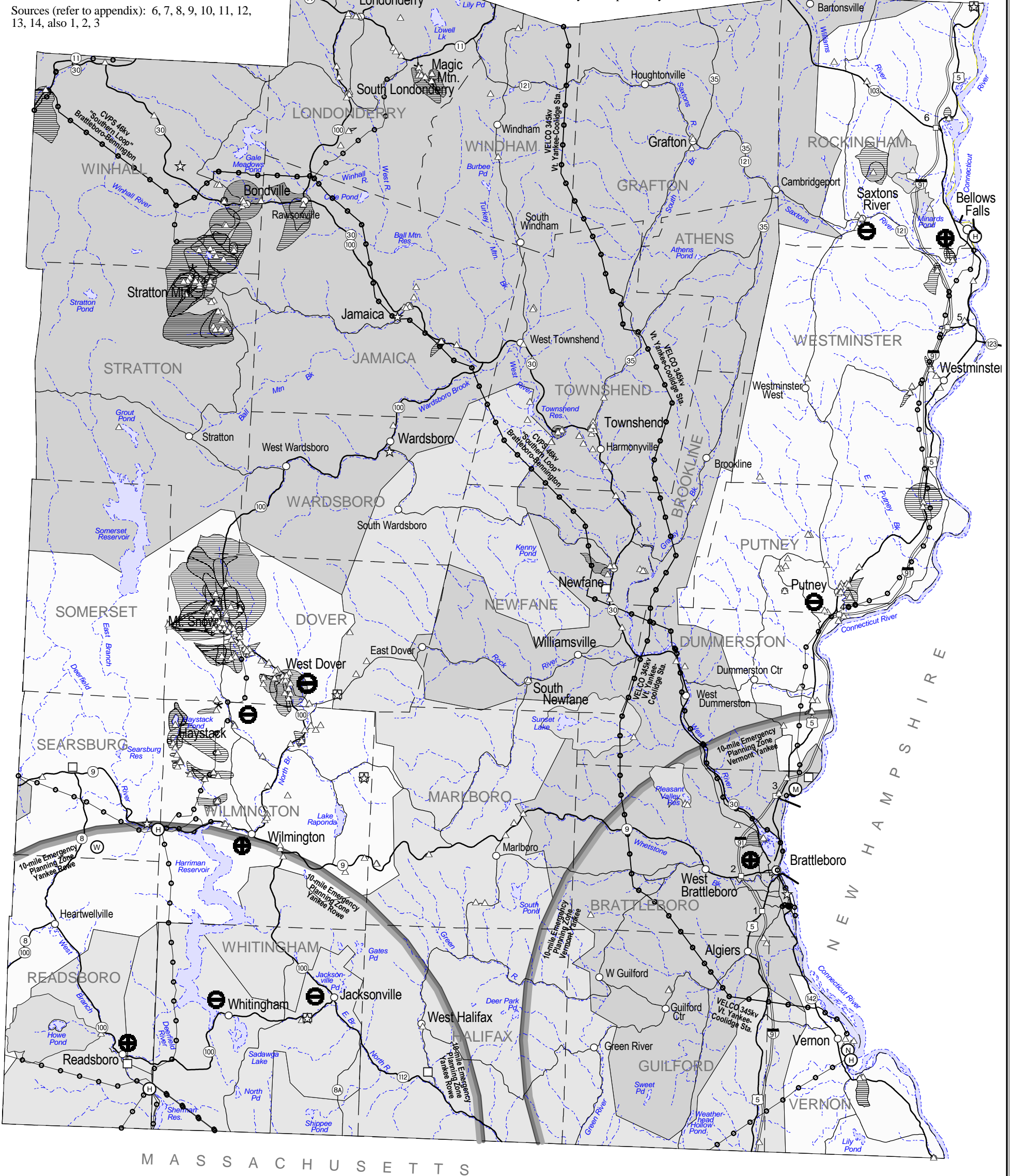
- hydro
- methane
- nuclear
- wind

- Well head protection area
- Surface water source protection area
- Municipal sewer service *
- Municipal sewer and water service *

- Transfer station
- Closed landfill
- Public water supply source
- Electric transmission line
- Boundary of 10-mile Emergency Planning Zone

* - symbol denotes service in that general area; actual service area is not located

A public water supply is a water supply system with ten or more connections or regularly serving an average of at least 25 individuals daily at least 60 days a year. These systems may be operated by a municipality or may be operated privately or cooperatively.



M A S S A C H U S E T T S