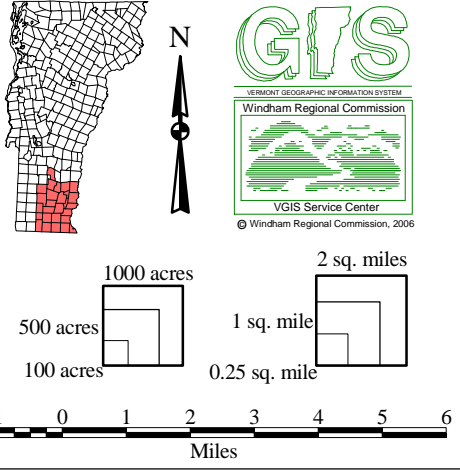


2006 Windham Regional Plan



June 2006; C:\REGPLN01\NATAREAS.APR: 11x17 map

Note: This map should be used for general reference and planning purposes only.

Sources (refer to appendix): 27, 28, 29, 30, 31, also 1, 2, 3

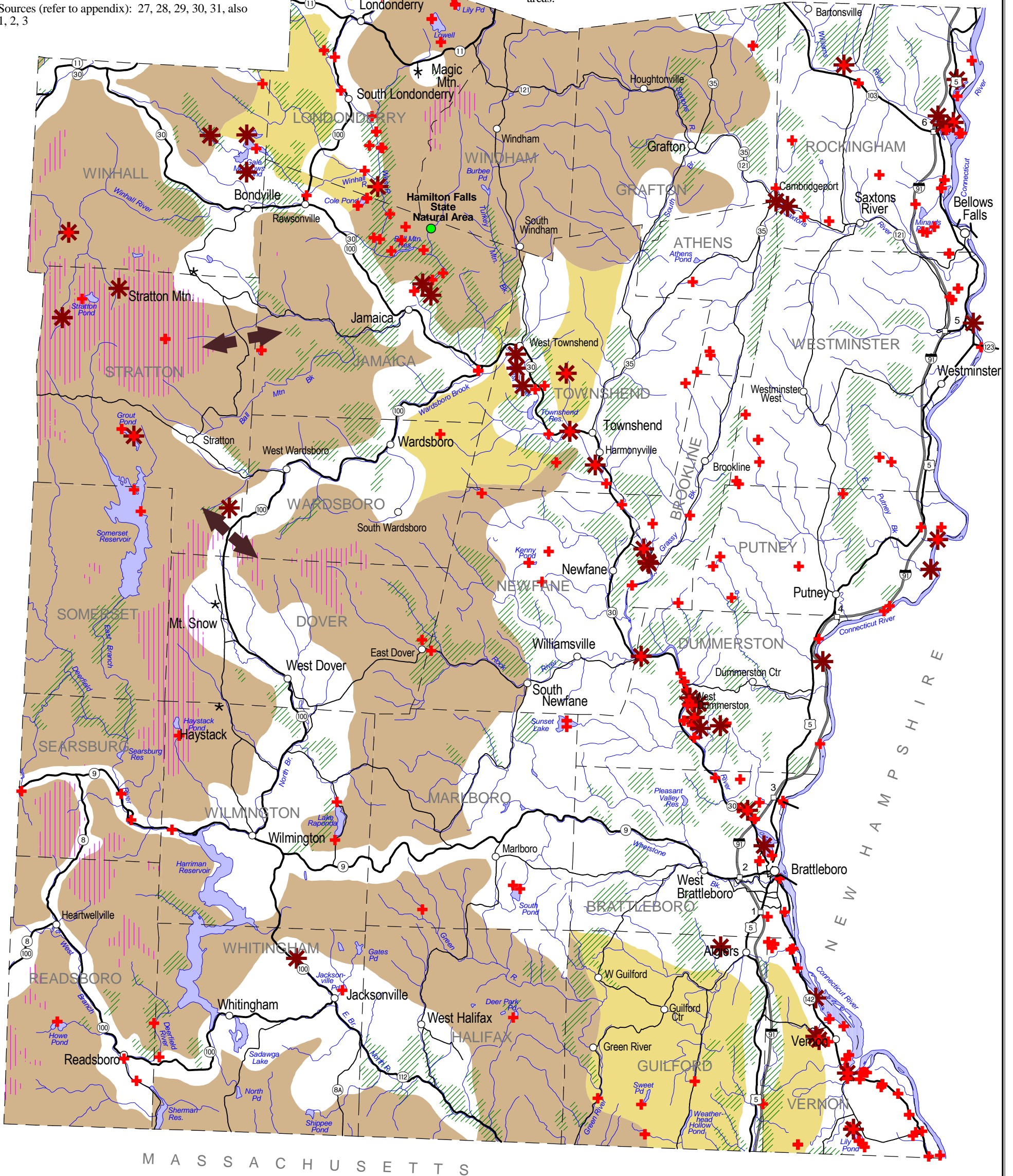
Ecological Resources

- + Rare, threatened, or endangered species occurrence
- * Significant natural community
- Deer wintering area
- Land over 2500 feet
- Bear production habitat
- Seasonal bear habitat
- Regionally significant bear travel corridor

Notes:

- The locations of rare, threatened, or endangered species occurrences or significant natural communities are approximate, but generally within 200 meters. The actual area represented by the species or community may be a few square feet or many hundreds of acres.

- Black bear travel corridors, according to Forrest Hammond, biologist with the Vermont Department of Fish and Wildlife, are forested habitats that are regionally important and are used by large numbers of bears to access critical seasonal foods or to link bear ranges and sub-populations. Travel corridors are comprised of bear travel routes and may include one or more road crossing areas.



M A S S A C H U S E T T S